



LANGLEY

SUTTON COLDFIELD

WELCOME

The Langley Sutton Coldfield Consortium welcomes you to its latest public engagement sessions for the Langley Sustainable Urban Extension (SUE).

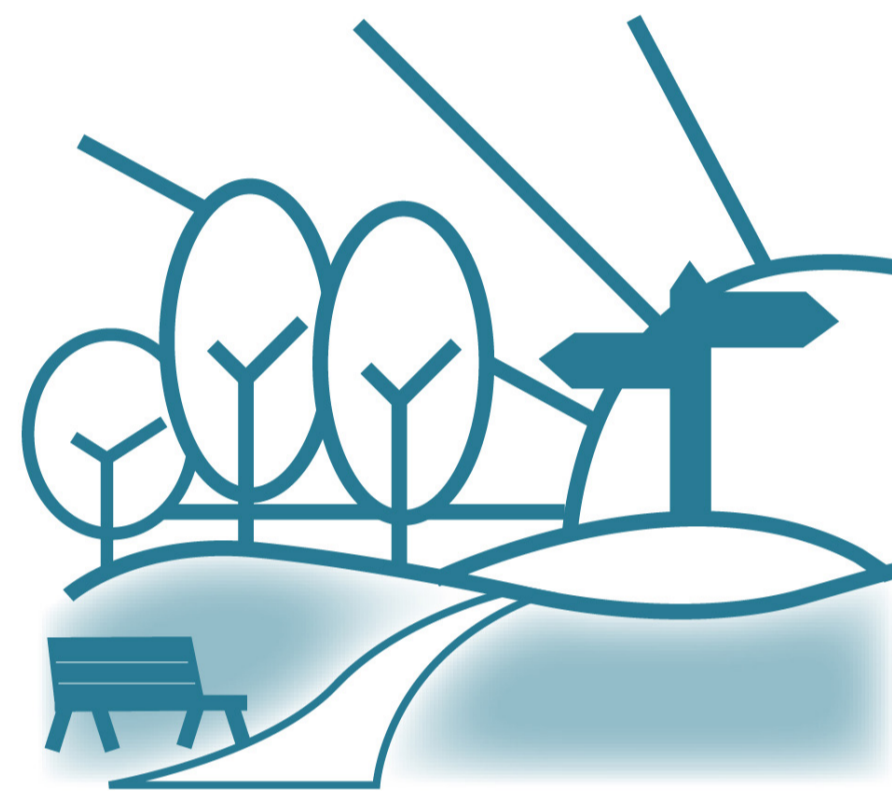
The Story So Far...

Langley was allocated in the Birmingham Development Plan (BDP) in 2017 by Birmingham City Council for a mixed use sustainable urban extension (Policy GA5). BCC subsequently adopted the Langley Supplementary Planning Document (SPD) in 2019 to guide future development proposals.

The Consortium Members (Homes England, Taylor Wimpey, Vistry Homes, New Hall Estates and William Davis) submitted an outline planning application [ref 2021/10567/PA] to Birmingham City Council in 2021, for up to 5,500 new homes and associated infrastructure including new schools, health centre, community facilities, retail, leisure, open space, play areas and sustainable drainage on the site. Details for the principal points of access into the site, including two new accesses to the A38, were also submitted.



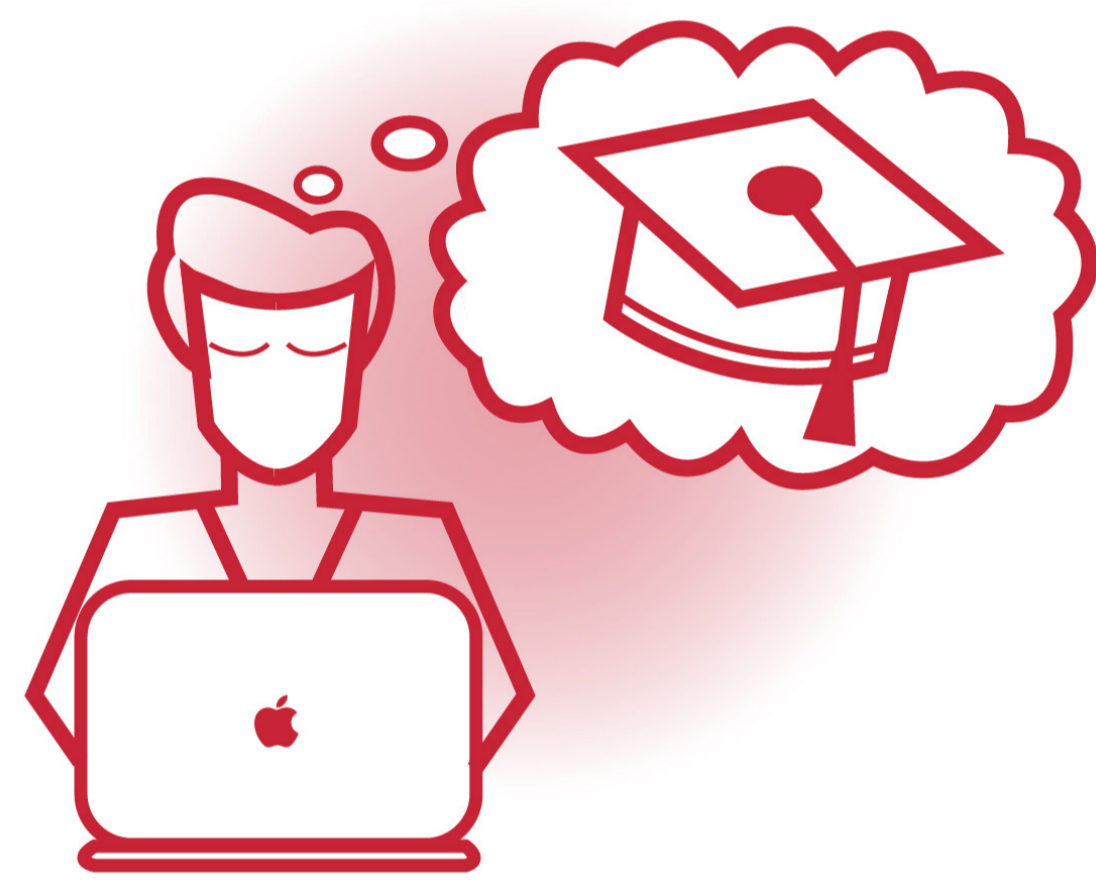
CIRCA 27 HA OF MIXED USES AND COMMUNITY FACILITIES



CIRCA 93 HA OF PUBLICLY ACCESSIBLE FORMAL AND INFORMAL GREEN SPACES AND SPORTS FACILITIES



PROVISION OF GP AND HEALTH CENTRE FACILITIES



1 X SECONDARY SCHOOL WITH 6TH FORM



5,500 NEW HOMES
CIRCA 14,000 RESIDENTS, 5,000 UNDER 18's, 8,000 WORKING AGE ADULTS, 1,000 OVER 65's



3 X NEW PRIMARY SCHOOLS AND NURSERY PROVISION



2 X NEW A38 HIGHWAY JUNCTIONS



A NETWORK OF STRATEGIC & LEISURE FOOTWAYS, CYCLEWAYS & PUBLIC TRANSPORT ROUTES



1 X DISTRICT HUB AND 2 X LOCAL CENTRES TO SERVE LOCAL NEEDS

WWW.LANGLEYSUTTONCOLDFIELD.CO.UK

